

Preparation

- RM Ltd. Will not be responsible for defects caused by failure to follow installation manual and the discovered defect after installing. Before installation, check the defect of flooring carefully.
- Rubber flooring and adhesive should be maintained at a temperature(15°~30℃) for at least 48 hours installation site for stabilization.
- Subfloor must be smooth, clean, level, flat, dry, no-cracks and clean without and dust, paing, wax, oil, grease, old adhesive material.

Method of Installation

- Measure the room and draw the center line.
- Arrange the tiles without adhesive according to the arrow mark on the back.
- Apply the adhesive with the right trowel according to the manufacturer's instructions. Be sure of the open time and working time by the following manufacturer's recommendation.
- Lay the rubber tiles carefully and press firmly in place. If it is happened bubbles in flooring due to adhesive carefully rub the entire surface of rubber flooring using the cork border.
- It is recommended to apply sufficient pressure over the floor using the 50kg roller. Rolling works out any air bubbles and ensures the whole flooring contact with the adhesive.
- The initial adhesive is low, so it sometimes is required to apply the weights, particularly at the seams, to maintain contact until the full curing time(24~48hours). This curing time is important for the durable flooring. During this time it should not move any equipment and prohibit all foot traffic the installation site.

Maintenance

- After installation, sweep the flooring and remove all dust using a vacuum cleaner.
- Apply the flooring with diluted cleaning products following the manufacturer's instructions and allow the solution on the flooring to act for about 5~10 minutes. Wash the flooring suing a mop or cleaning machine.(with pad or brush)
- Remove the remaining deterfents with wet vacuum.
- Rinsing several times and dry completely.
- To maintain good condition on the floor, apply the recommended was 2~3times.

RM Ltd.

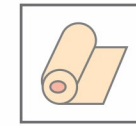
62-13, Noha-gil 330beon-gil,
Paltan-myeon, Hwaseong-si,
Gyeonggi-do, 18576, South Korea

Tel. 82.31-366-5716
Fax. 82.31-352-7806
www.rmfloor.com
contact@rmfloor.com

RM First Green Rubber Roll

RM Rubber Manufacture

RM First Green Rubber



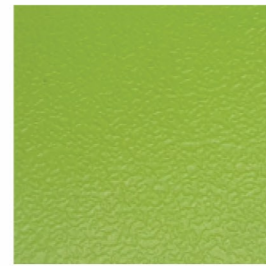
Roll



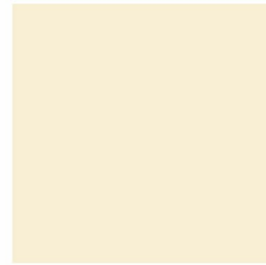
ROSE 8000



ROSE 4100



ROSE 8200



ROSE 7500



ROSE 5300



ROSE 9200



ROSE 1000



ROSE 3200



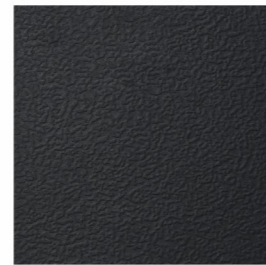
ROSE 9000



ROSE 4200

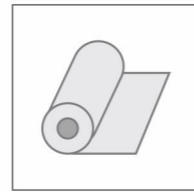


ROSE 3000



ROSE 2000

Solid Embo Roll



2mm(T) X 1200(W) X 15m(L)
3mm(T) X 1200(W) X 12m(L)
5mm(T) X 1000(W) X 10m(L)



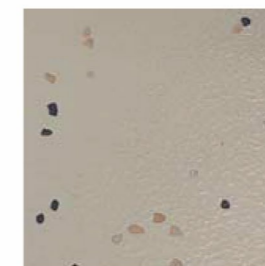
*샘플북 부착 샘플과 실제 제품의 색상은 차이가 있을 수 있습니다.



ROCE 7260



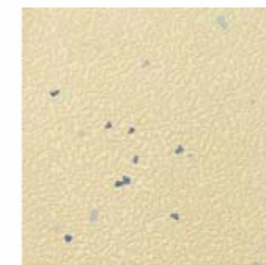
ROCE 4143



ROCE 5003



ROCE 1021



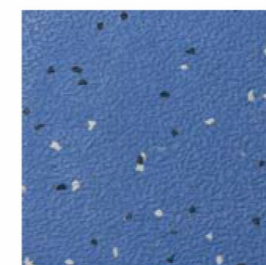
ROCE 8098



ROCE 8621



ROCE 9091



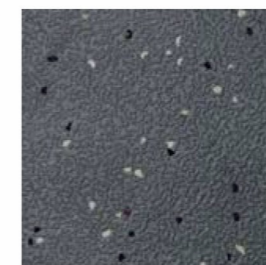
ROCE 9121



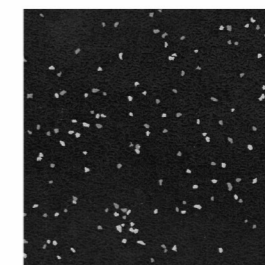
ROCE 9221



ROCE 7502

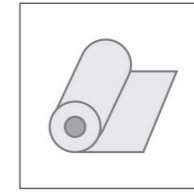


ROCE 3021



ROCE 2031

Chip Embo Roll



2mm(T) X 1200(W) X 15m(L)
3mm(T) X 1200(W) X 12m(L)
5mm(T) X 1200(W) X 10m(L)



*샘플북 부착 샘플과 실제 제품의 색상은 차이가 있을 수 있습니다.