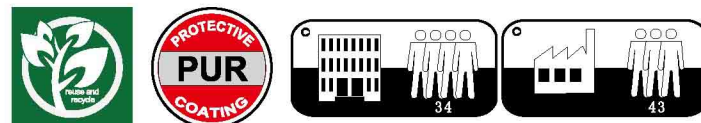


# TOP2000



TOP2000 is a homogeneous vinyl floorcovering suitable for most heavy traffic areas such as healthcare, education, retail and industry. TOP2000 is available in 23 colors and made of high quality raw materials. It receives a PUR surface treatment for protection and easy maintenance. The PUR also provides a better base for future maintenance.

## INSTALLATION

TOP2000 homogenous vinyl should be stored vertically. Installation should be made in accordance with installation guidelines supplied and regularly updated by our technical department. Installation should be carried out in accordance with local standards. Subfloor to be smooth, hard, clean and dry prior to laying. Where applicable the subfloor must incorporate an effective Damp Proof Membrane. The material must be allowed to acclimatise 24 hours prior to installation in a room temperature of between 18-24°C. All seams must be heat welded using the matching weld rod.

## MAINTENANCE

Maintenance should be carried out regularly to retain the appearance and durability of the floor. The floorcovering should be maintained with regular sweeping and damp mopping using a neutral cleanser, or machine scrubbing with an appropriate pad. Further maintenance instructions are available upon request.

## TECHNICAL DATA

| DESCRIPTION         |        |                  |                      |
|---------------------|--------|------------------|----------------------|
| Total thickness     | EN 428 | mm               | 2.0mm                |
| Wearlayer thickness | EN 429 | mm               | 2.0mm                |
| Weight              | EN 430 | g/m <sup>2</sup> | 3300g/m <sup>2</sup> |
| Width               | EN 426 | cm               | 200cm                |
| Length of sheet     | EN 426 | m                | 20m                  |

| CLASSIFICATION        |               |       |                     |
|-----------------------|---------------|-------|---------------------|
| Classification        | EN 685        | class | 34-43               |
| Fire rating           | NF P 92-506   | --    | M2                  |
|                       | EN 13 501-1   | --    | Class Bfl-S1        |
|                       | DIN 4102      | --    | B1                  |
|                       | GB 8624-1997  | --    | GB 8624 B1          |
| Toxic testing         | GB 18586-2001 | --    | Pass                |
| Electrical resistance | EN 1815       | kv    | < 2                 |
|                       | EN 1081       | Ω     | >10 <sup>9-10</sup> |
| Slip resistance dry   | EN 13893      | --    | ≥0.3                |
| Slip resistance wet   | DIN 51130     | --    | R9                  |

| PERFORMANCE            |   |                    |                  |
|------------------------|---|--------------------|------------------|
| Abrasion resistance    | EN 649  | --                 | Group P          |
| Dimensional stability  | EN 434  | %                  | ≤0.40            |
| Residual indentation   | EN 433  | mm                 | approx. 0.08     |
| Thermal resistance     | EN 12667  | m <sup>2</sup> K/W | ≈ 0.01           |
| Colour fastness        | EN ISO 105 - B02                                    | degree             | ≥6               |
| Chemical resistance    | EN 423  | --                 | good             |
| Castor wheel test      | EN 425  | --                 | suitable         |
| Impact sound reduction | EN ISO 717/2  | dB                 | approx. + 4      |
| Flexibility            | EN 435  | --                 | excellent        |
| Hygiene treatment      | MRSA  | --                 | very good        |
|                        | DIN EN ISO 846-A/C                                  | --                 | Good             |
| Surface treatment      |   |                    | PUR              |
| Underfloor heating     |   | °C                 | suitable max. 28 |
| Maritime usage         | IMO RES A 653 (16)-IMO MSC 61 (67) Annex 1 Part 2,5 |                    |                  |

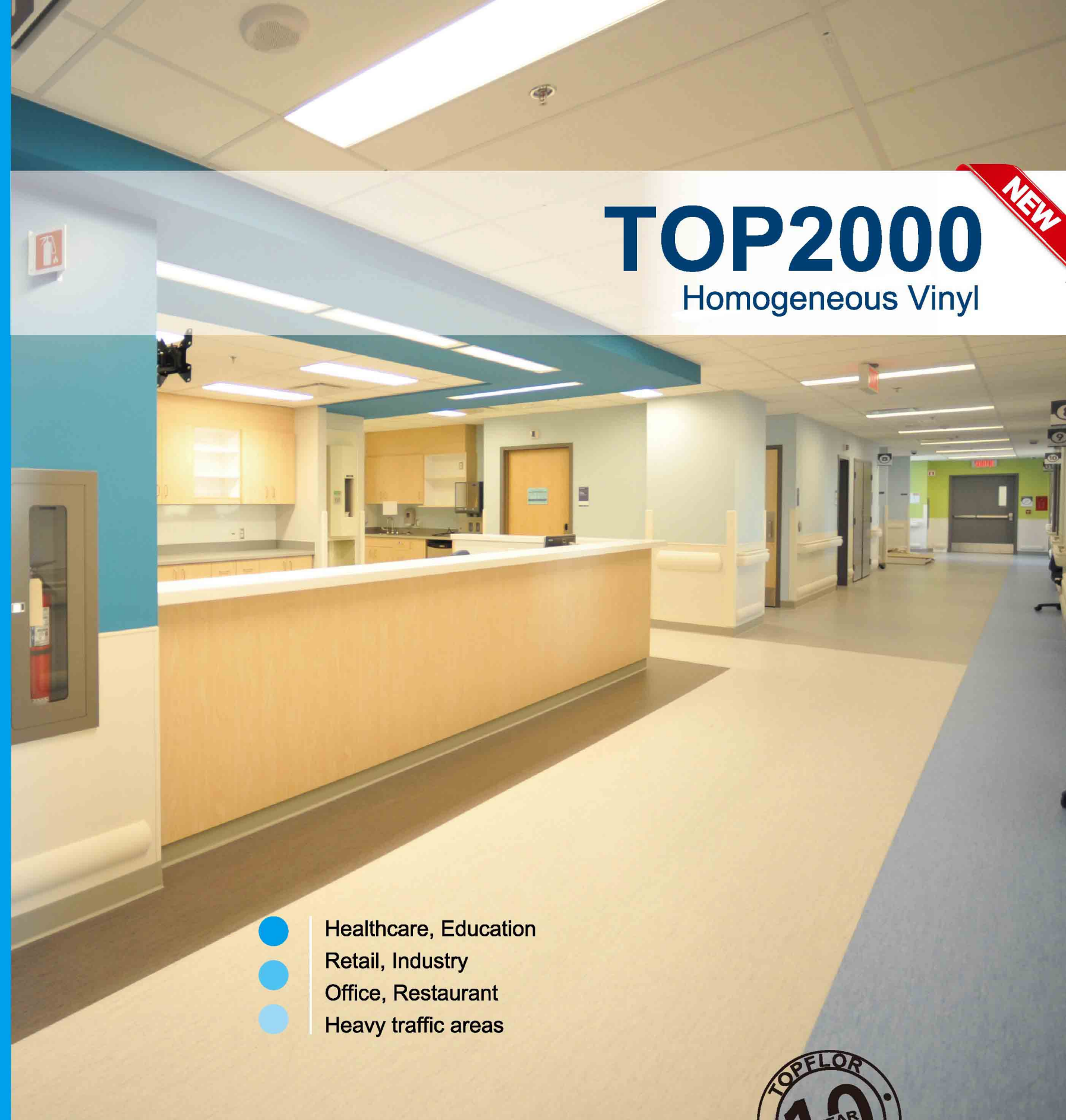
| CE MARKING |          |  |  |
|------------|----------|--|--|
| CE         | EN 14041 |  |  |



Homogeneous Vinyl

TOP2000

Topflor



# TOP2000

Homogeneous Vinyl

NEW

- Healthcare, Education
- Retail, Industry
- Office, Restaurant
- Heavy traffic areas



**Topflor**

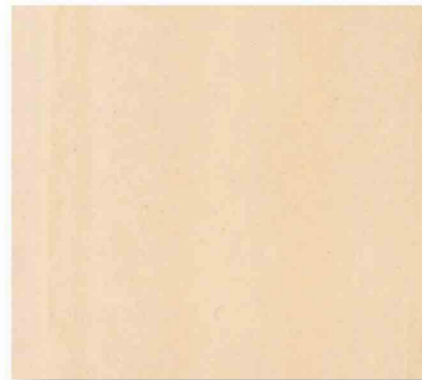
The ultimate flooring  
The ultimate performance

# TOP2000

● 2.0mm(T) X 2.0m(W) X 20m(L)



2513



2504



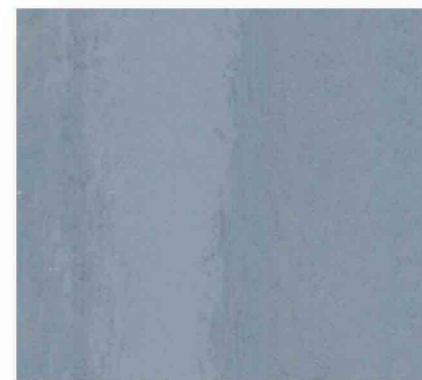
2508



2514



2502



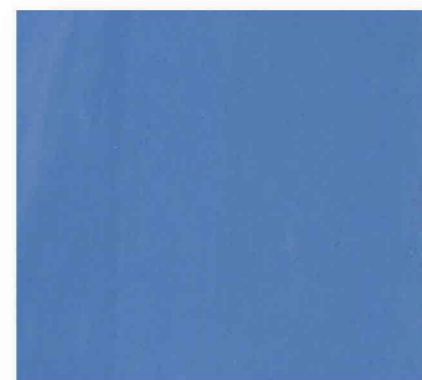
2523



2515



2521



2506



2516



2510



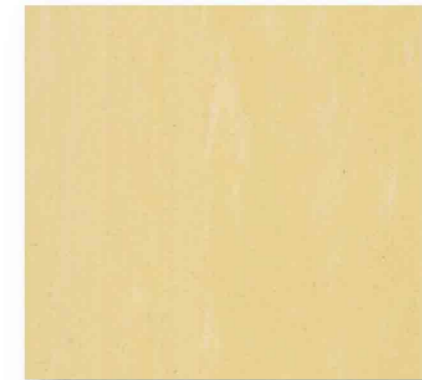
2505

# TOP2000

● 2.0mm(T) X 2.0m(W) X 20m(L)



2517



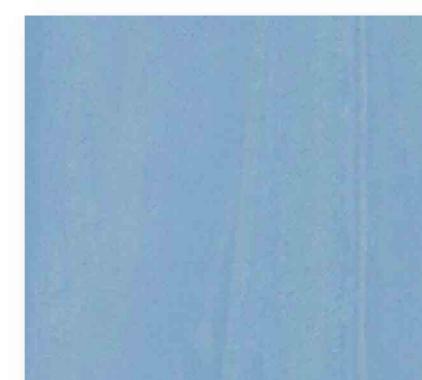
2503



2501



2519



2507



2524



2518



2512



2511



2520

